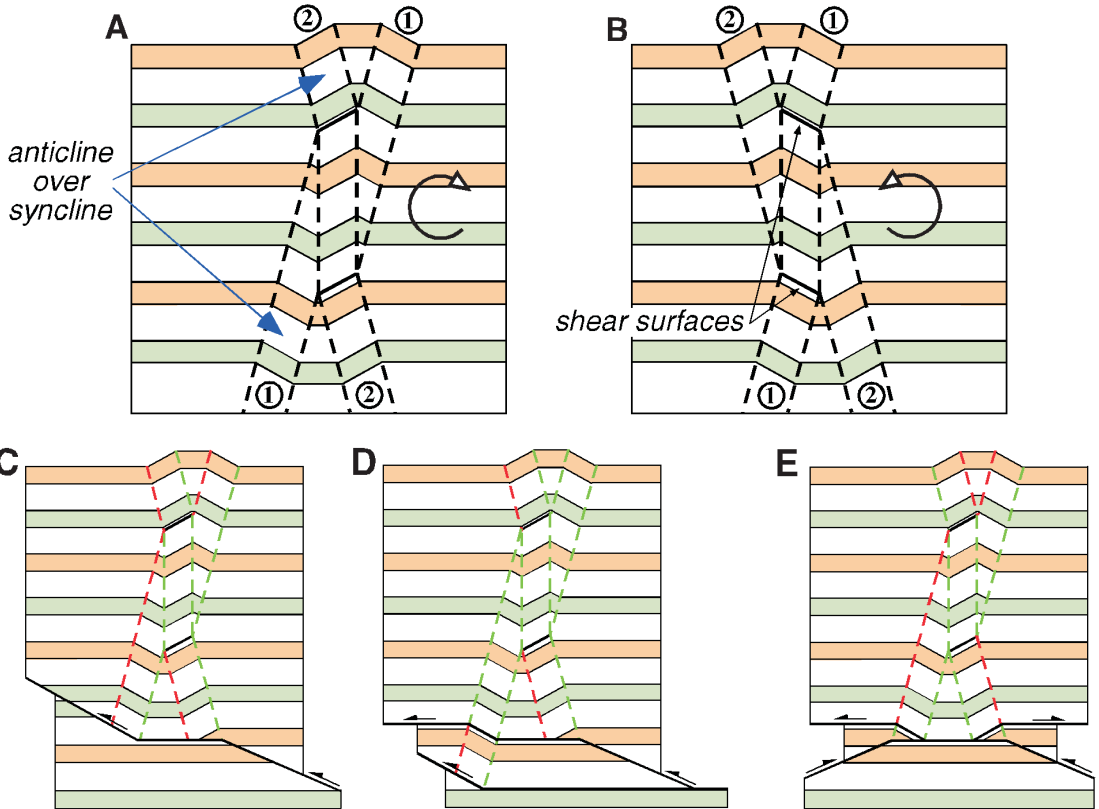


Basic concept

Kinematic Models



Seismic Interpretation of Contractional Fault-Related Folds
An AAPG Seismic Atlas

Studies in Geology #53

Section 1B-7: Interference structures

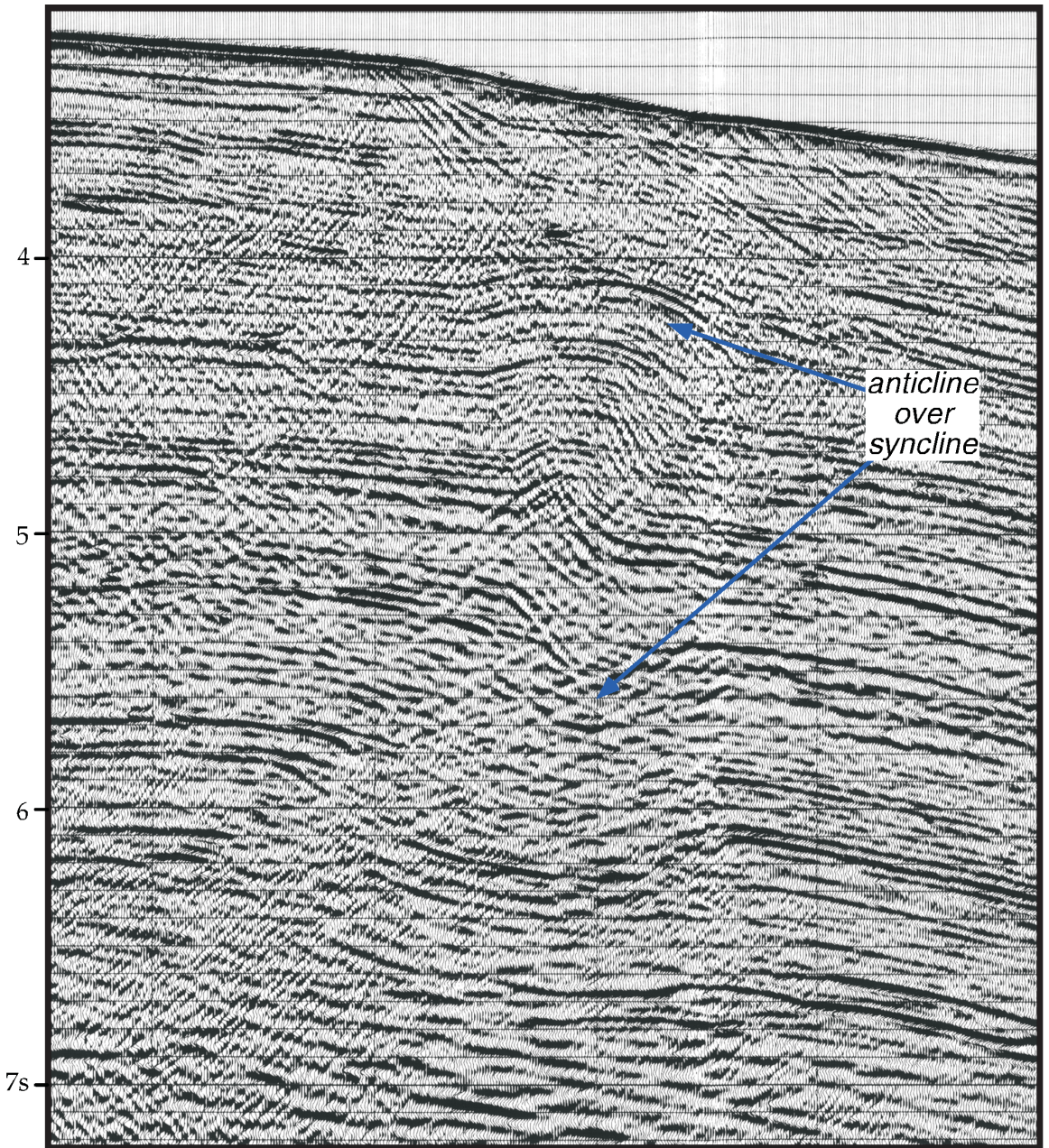
John H. Shaw, Christopher Connors, and John Suppe

©2005 AAPG

Basic concept

Seismic Example: Gulf of Mexico, U.S.A.

1 km



Data courtesy of Texaco, Inc

Seismic Interpretation of Contractional Fault-Related Folds
An AAPG Seismic Atlas

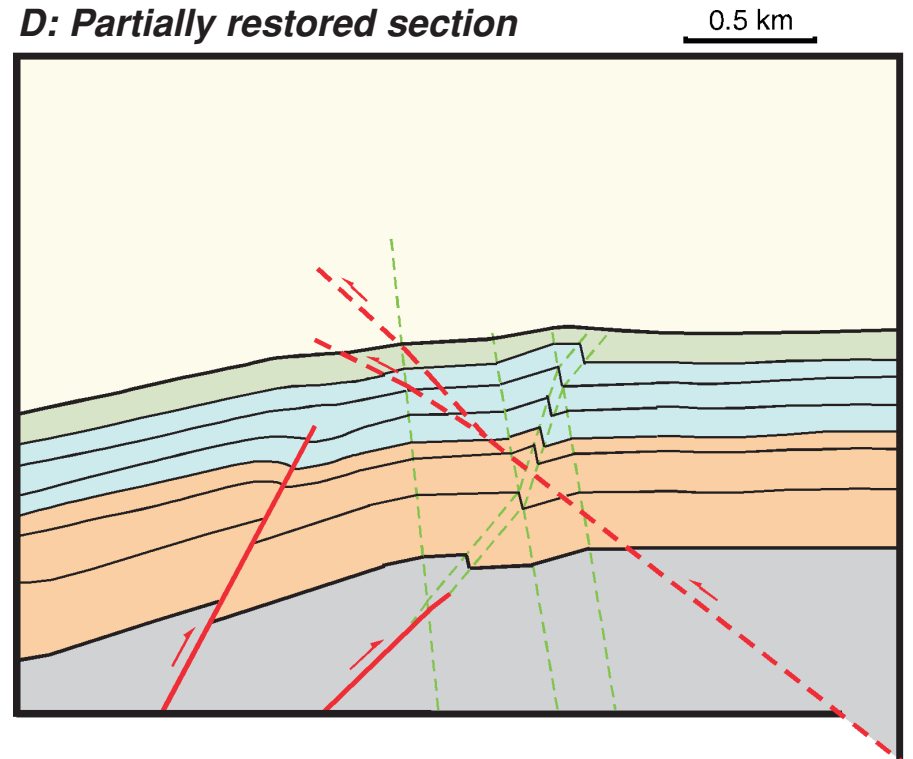
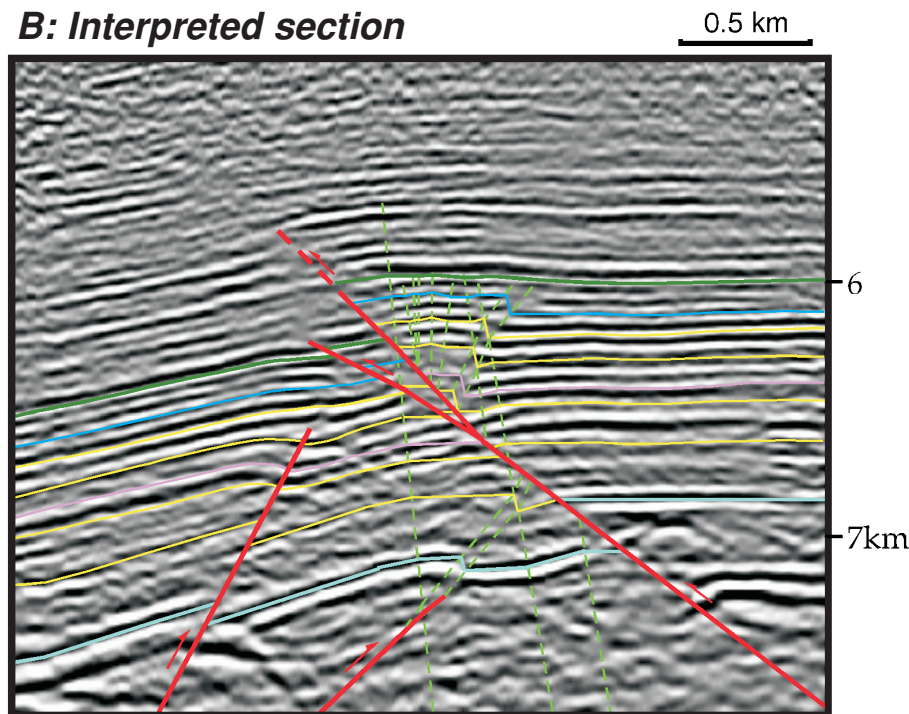
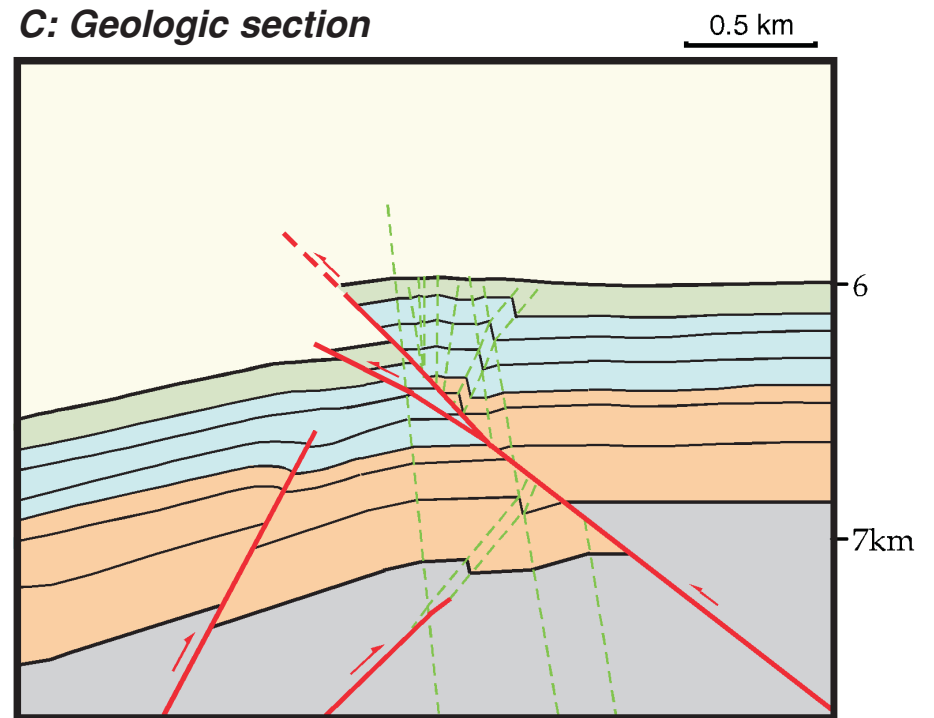
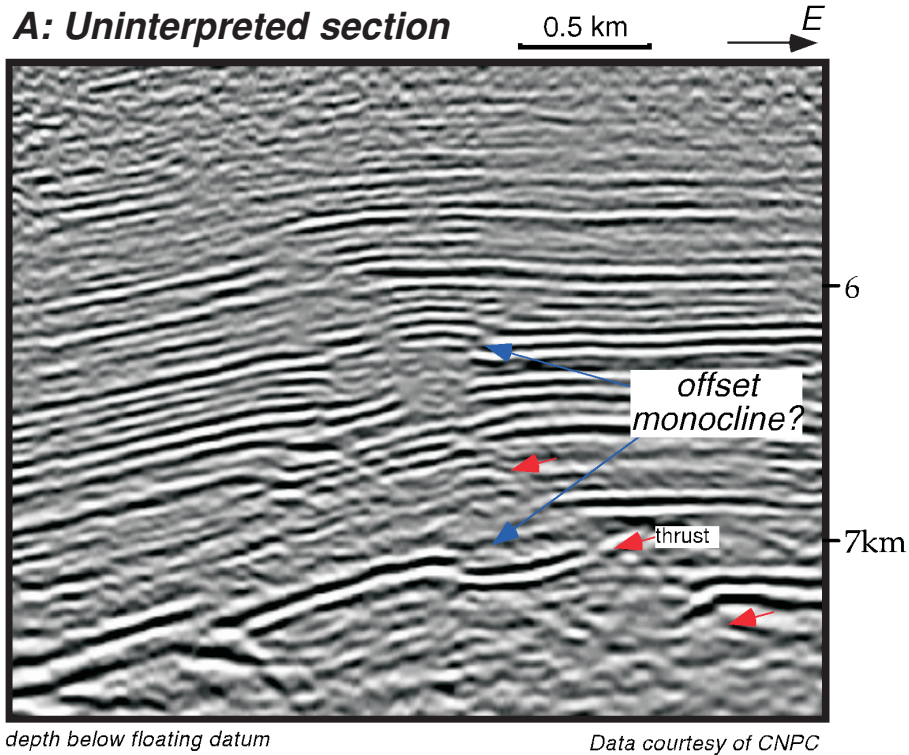
Studies in Geology #53

Section 1B-7: Interference structures

John H. Shaw, Christopher Connors, and John Suppe

©2005 AAPG

Complex interference structure



Seismic Interpretation of Contractional Fault-Related Folds
An AAPG Seismic Atlas

Studies in Geology #53

Section 1B-7: Interference structures

John H. Shaw, Christopher Connors, and John Suppe

©2005 AAPG