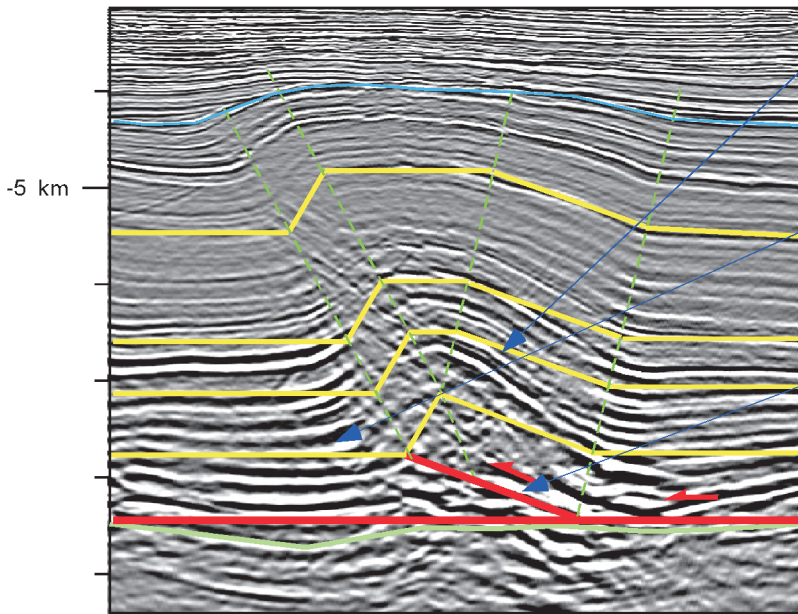
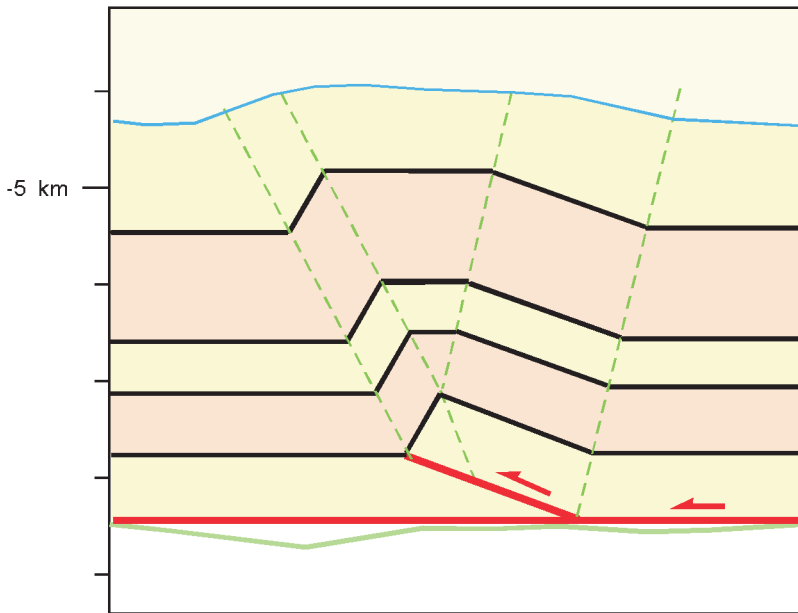


model solution

Discrepancies



- 1** Deep dips do not match projected shallow dips.
- 2** Small forelimb fold not accounted for in model
- 3** Thrust ramp cuts down-section with respect to seismic reflectors



Seismic Interpretation of Contractional Fault-Related Folds
An AAPG Seismic Atlas

Studies in Geology #53

Section 2-10: Figure 8

Frank Bilotti, Timothy Brickner, Thomas Elliott, Chip Morgan, Richard Redhead, and Yusri

©2005 AAPG