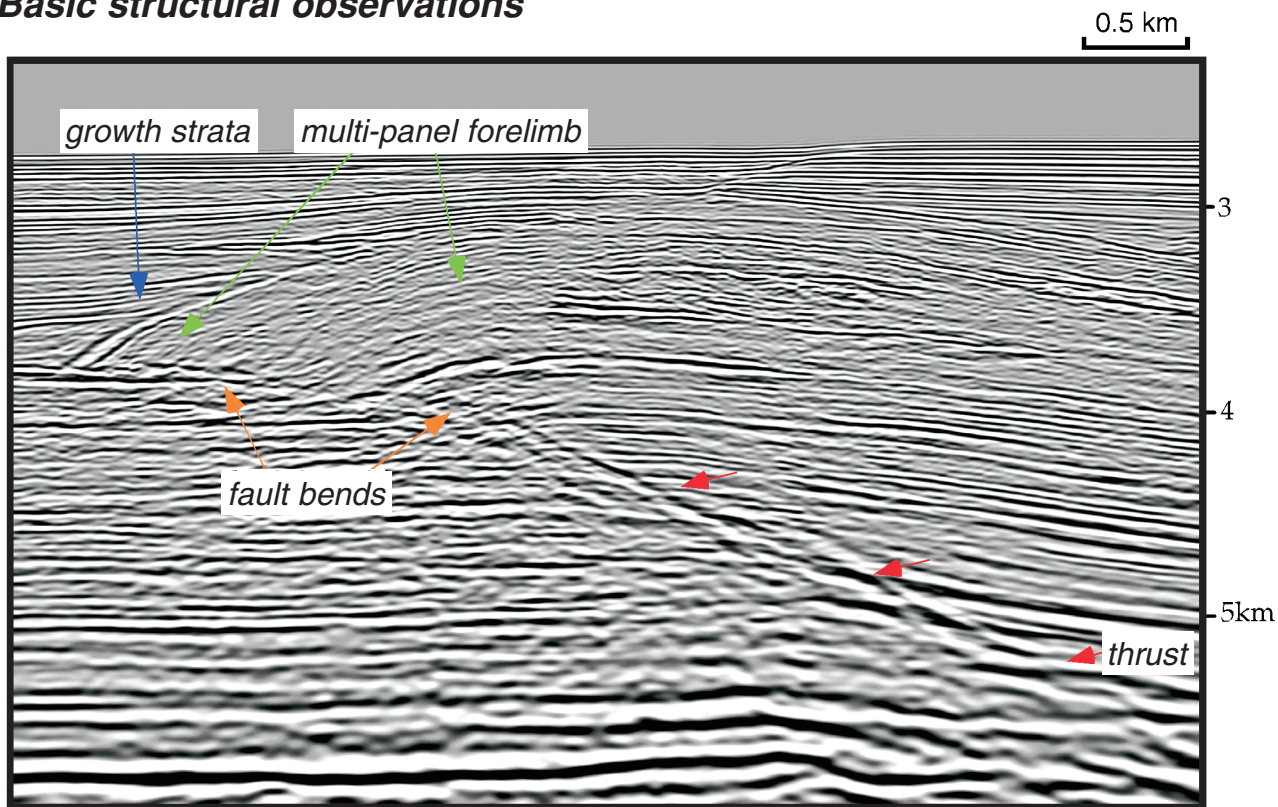


Basic structural observations



Seismic Interpretation of Contractional Fault-Related Folds
An AAPG Seismic Atlas

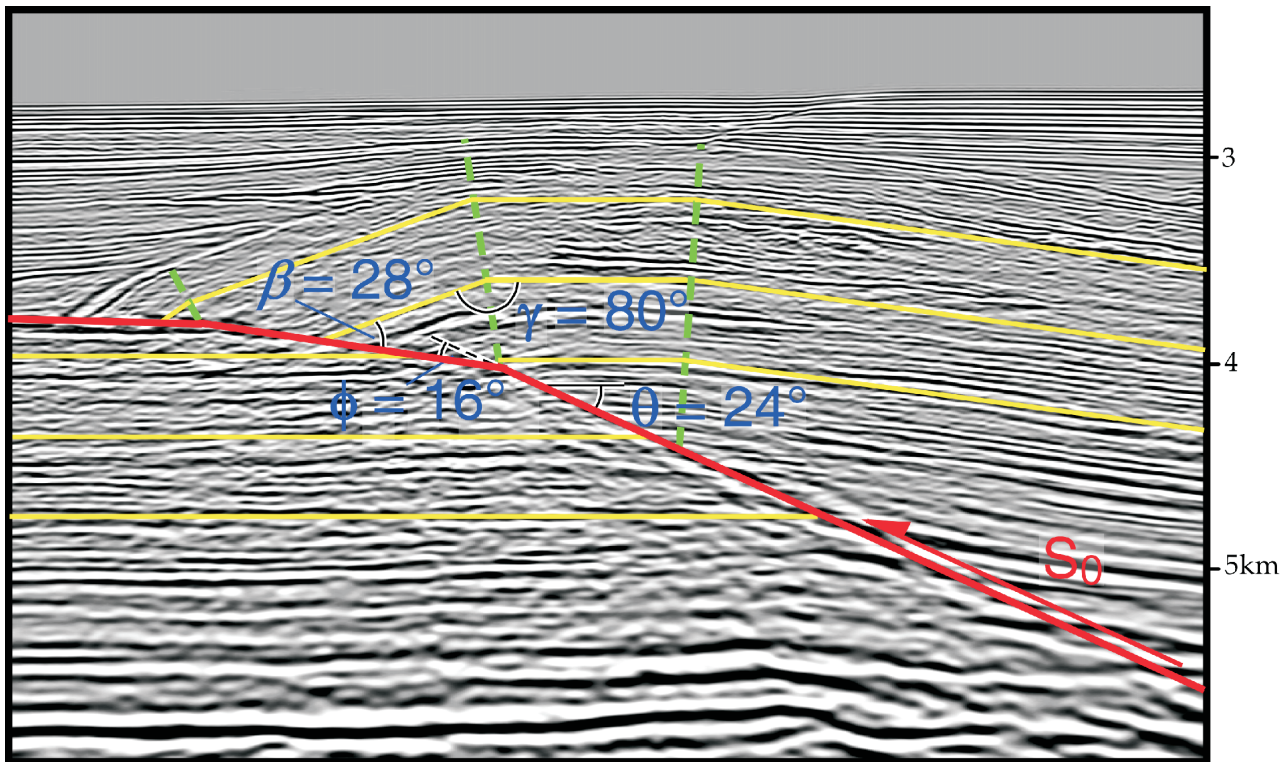
Studies in Geology #53

Section: Introduction

John H. Shaw, Christopher Connors, and John Suppe

©2005 AAPG

Quantitative structural interpretation based on fault-bend fold theory



Seismic Interpretation of Contractional Fault-Related Folds
An AAPG Seismic Atlas

Studies in Geology #53

Section: Introduction

John H. Shaw, Christopher Connors, and John Suppe

©2005 AAPG